

PARVATI ENGINEERING WORKS



DABHEL CO OP. INDUSTRIAL SOCIETY SURVEY NO.168-12 GROUND FLOOR M.G.ROAD
DABHEL, NANI DAMAN , DAMAN , INDIA - 396210



+91-9824503455



parvati_eng_works1@yahoo.com



www.parvatiengineeringworks.com

OUR CLIENTS



PASSBOX



LOCKERS

About Our Company

Welcome to Parvati Engineering Works Engineering Excellence Since 2002

Parvati Engineering Works is an ISO 9001:2015 certified company, recognized for its unwavering commitment to quality and innovation. Established in 2002, we have rapidly emerged as a trusted name in the manufacturing and export of pharmaceutical and plastic machinery. With a strong presence in both domestic and international markets, we are known for delivering world-class engineering solutions tailored to meet the evolving needs of our clients.

Our Journey

From humble beginnings in a rented workshop in Somnath, Dabhel, Nani Daman (Daman & Diu UT), Parvati Engineering Works has grown into a professionally managed enterprise. Initially focused on small-scale fabrication, repair, and machining, the company evolved through dedication, technical excellence, and customer-centric innovation. Today, we operate from a state-of-the-art facility, powered by skilled engineers and advanced manufacturing technologies.

Quality Policy

At Parvati Engineering Works, quality is the cornerstone of everything we do. We are committed to manufacturing and supplying high-performance products that meet legal, regulatory, and customer-specific requirements. Our quality objectives are achieved through:

- Strict adherence to statutory and regulatory standards
- Strategic direction and planning by top management
- A robust and effective Quality Management System (QMS)
- Active involvement of all stakeholders in maintaining QMS integrity
- Continuous upgrading of technology and employee competencies



Kashinath Ramnath Kandekar
(Founder & Managing Director)



MACHINERY



BLENDER



CIP SYSTEM



BELT CONVEYOR



CHAIN CONVEYOR



MODULAR CONVEYOR



LPD



PASTE CATTLE



MULTI MILL



VIBRO SIFTER



MOBILE STIRRER

OCTAGONAL BLENDER

An Octagonal Blender is a type of industrial mixer used in the pharmaceutical industry for uniform blending of dry powders and granules. Its unique octagonal shape provides efficient mixing with minimal power consumption.

Usage in Pharma:

- Blending of dry powders and granules.
- Suitable for mixing large volumes.
- Ensures uniform drug content in formulations.
- Used in tablet and capsule production processes.



TROLLEY SECTION



TRAY TROLLEY



CABINET TROLLEY



CAGE TROLLEY



PUNCH TROLLEY



TROLLEY



MOPPING TROLLEY



DRUM TROLLEY



PLATFORM TROLLEY



WEIGHT TROLLEY



PALLET TROLLEY



MULTI MILL SIEVE & SIFTER SIEVE TROLLEY



HYDRAULIC LIFT

WEIGHT TROLLEY

The Weight Trolley is a GMP-compliant mobile unit designed for the safe and efficient transfer of calibrated weights used in balance and scale calibration within pharmaceutical manufacturing. Constructed from high-grade stainless steel, it ensures easy cleaning, corrosion resistance, and contamination control.

The trolley facilitates smooth mobility, organized storage, and secure handling of weights, supporting accurate and compliant weighing processes in cleanroom environments.



PRODUCTION DIVISION



FILTER HOUSING



PUNCH CABINET



INSPECTION HOOD



RACKS



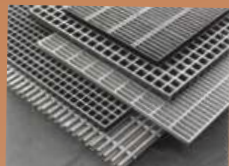
SINK TABLE



TABLES



OFFICE TABLE



WASH ROOM
GRATTING



Y CHUT



IPQC TABLE



JACKATING DUCT



STEP LADDER



CUPBOARDS



IPC BIN

PASSBOX

A pass box in a pharmaceutical company is a sealed chamber installed between two cleanroom areas to safely transfer materials while minimizing the risk of cross-contamination. It helps maintain cleanliness levels by reducing human traffic between clean zones.

Pass boxes can be static (non-ventilated) or dynamic (ventilated with HEPA filtration), depending on cleanliness requirements. They play a vital role in maintaining strict GMP and contamination control standards in pharmaceutical manufacturing.



CHANGE ROOM



WASTE BIN



CROSS OVER BENCH



VISITOR APRON
CUPBOARD



V APRON CUPBOARD

LOCKERS

A locker in a pharmaceutical company is a storage unit used in change rooms for employees to securely store personal belongings, clothing, and items not allowed in cleanroom areas. Lockers help support GMP compliance by ensuring a clear separation between street clothes and cleanroom garments, reducing contamination risks.

They are typically made from stainless steel or other cleanroom-compatible materials for easy cleaning and hygiene maintenance. Proper locker design and usage contribute to overall cleanliness and personnel hygiene in pharmaceutical environments.



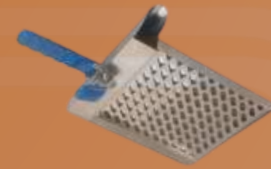
ANCILLARIES AND ACCESSORIES



STOOL CHAIR



SURGICAL DRUM



TABLET CAPSULE CONTAINER



TEFLON HAMMER



TOOL BOX



KEY BOX



DRAIN TRAP



HAND DRYER



MIRROR



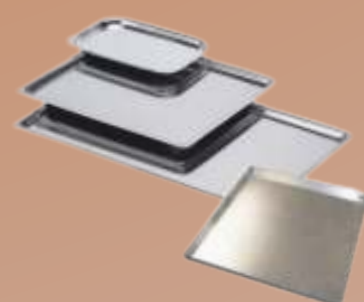
FUNNEL



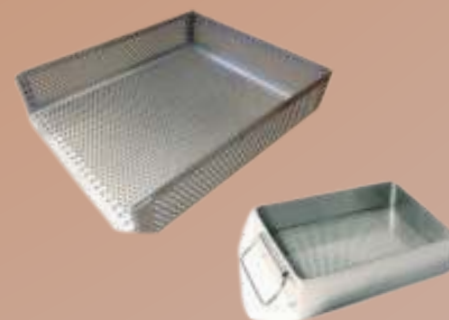
HAND WASH UNIT



BUCKET



DRYER TRAY



AMPOULE TRAY

DRAIN TRAP

A drain trap in a pharmaceutical company is a plumbing component installed in drainage systems to prevent the backflow of gases, odors, and contaminants from the drain into cleanroom or production areas. It typically contains a water seal or mechanical barrier that acts as a physical block.

Made from corrosion-resistant materials like stainless steel or PVC, drain traps are designed for easy cleaning and sterilization. They are commonly used in wash areas, process rooms, and cleanrooms to maintain hygiene and GMP standards, ensuring a controlled and contamination-free environment.



ANCILLARIES AND ACCESSORIES



MUG & JAR



OIL CAN



MORTAR & PESTLE



SCOOP



SOAP DISPENSOR



SOP STAND



SPATULA

POWDER SAMPLER

A powder sampler in a pharmaceutical company is a specialized tool used to collect representative samples of powdered materials (such as raw materials or finished products) for quality control testing. It ensures that the sample taken reflects the overall batch and helps verify parameters like purity, particle size, and moisture content.

There are different types of powder samplers, including:

- Slot samplers
- Core samplers
- Thief samplers



CANTEEN SECTION



BAIN MARIE



WASTE COLLECTION
TROLLEY



EXHAUST HOOD



DINING TABLE

KITCHEN TABLE

A kitchen table in a pharmaceutical company is typically found in the staff cafeteria or pantry area, where employees can sit and eat during breaks. These tables are usually made from stainless steel or other easy-to-clean, durable materials to ensure hygiene and comply with workplace cleanliness standards.

While not part of the production area, maintaining cleanliness in kitchen and dining areas is essential to support overall GMP practices and promote employee health and safety.



TANKS & VESSELS



AIR TIGHT CONTAINER



LIQUID STORAGE DRUMS



MILK BUCKET



SILO TANK



MIXING VESSEL



PRESSURE VESSEL



RO WATER TANK

LIMPET TANK

A limpet tank in a pharmaceutical company is a type of stainless steel vessel equipped with an external jacket (called a limpet coil) used for heating or cooling the contents inside the tank. The limpet coil allows steam, hot water, or chilled water to circulate around the tank without direct contact with the product.

These tanks are commonly used in formulation, storage, or reaction processes where precise temperature control is essential. Limpet tanks help maintain product stability and consistency, ensuring compliance with GMP and quality standards in pharmaceutical manufacturing.



PARVATI ENGINEERING WORKS



DABHEL CO OP. INDUSTRIAL SOCIETY SURVEY NO.168-12 GROUND FLOOR M.G.ROAD
DABHEL, NANI DAMAN , DAMAN , INDIA - 396210



+91-9824503455



parvati_eng_works1@yahoo.com



www.parvatiengineeringworks.com



DIGIAIADVISORS

For Designing Contact Us : 7984402022